

Solaré
R A S E L - H E K M A

Lumera
W A T E R C H A L E T S

Solaré
RAS EL-HEKMA

Where The North Coast's
Tranquil Sea
Meets The Italian 'La Dolce Vita'.

DISCLAIMER
1. This façade is subjected to minor amendments without prior notice. 2. Specification, materials and/or colors might be subject to change without prior notice. 3. Material availability, actual unit finishings for front windows, porches, Terraces Area, loggia and exterior trim may vary by elevation, styles and floor level. 4. This façade is for illustrative purposes only. 5. Pools & Car parking are not included in the project.



Inspiration

COASTAL *Italian* LIVING
at its Finest.


Right in the heart of the Mediterranean coastline lies a tranquil gem, oozing with Italian charm and distinctive architecture to capture the true essence of 'La Dolce Vita' or the sweet life. A serene floating paradise, artfully designed on varied elevations to transform every home into an open amphitheater of clear skies and infinite sea, out of a postcard. Solaré is in short, luxury splashed with all shades of captivating blue to elevate new standards of exclusive living in Ras El-Hekma.



Location

A SEA-FRONT *Paradise* *Not* TO BE MISSED!

Escaping to a seafront paradise is now closer than you think. Solaré puts residents' convenience in mind with a prime location, crowning the North Coast's most coveted spot; Kilo 199 in Ras El-Hekma. Accessible from all main roads, Solaré can be easily reached via Fouka Road, Dabaa Road, Wadi Natroun and Al Alamein Road or by simply flying in from Al Alamein International Airport. The destination also enjoys close proximity to Sidi Abdel Rahman and Marsa Matrouh, placing your summer home at the intersection of tranquility and non-stop action.

A low-angle photograph of a palm tree trunk and fronds against a bright, cloudy sky. The trunk is in the center, showing its textured bark. The fronds are dark green and fan out to the right. The sky is a mix of light blue and white clouds, with a bright light source on the left creating a soft glow.

*Solaré bursts with lively vibes for worlds of Italian luxury
to intersect with refined comfort, straight in the heart of
your *Seafront* home.*



Inspiration

A 360 SUMMER DESTINATION OF
INFINITE VIEWS & *Endless Enjoyment*

Solaré is more than just a summer home with an enchanting resort feel, but rather a 360 outlook on floating beauty and Italian way of living, coming alive on 386 acres. The gated community's edge lies in a smart elevation technique that not only breaks down the optimum in lagoon serenity and limitless water views inside 82% of its homes but also envelopes residents in endless hours of sunshine, perfected by ideal breeze circulation for ultimate wellbeing. Designed as an all-inclusive coastal escape where privacy reigns supreme.

DISCLAIMER
1. This façade is subjected to minor amendments without prior notice. 2. Specification, materials and/or color might be changed based on the final design and material availability, actual unit finishing. 3. This facade is for illustrative purposes. 4. Pools & Car parking canopies are not included.



Inspiration

Solaré boasts different zones each with authentic experiences of its own to radiate inescapable warmth, as well as non-stop enjoyment for all moods and age groups. With a well curated collection of more than 16 unit types and branded serviced residences, Solaré opens your eyes on spacious living options where Italian meticulousness truly speaks volumes. Perfect for serenity seekers, sea lovers and adventure enthusiasts, Solaré is a once in a lifetime opportunity to decelerate on a private 1 km beach stretch or immerse in swimmable lagoons and more than 20 pools that take in picturesque views from every angle.



Concept

A HIGHER FORM OF LIVING *Elevating* MAGICAL VIEWS

Every aspect of Solaré is carefully designed to maximize views, powered by breakthrough elevations that create an immersive living experience that is both relaxing and inspiring, but most importantly in absolute unity with the nature. The destination's design concept rises with residents' ambitions more than 31 meters above sea level to open onto 8 impressive levels of panoramic sea-views that are less than 200 meters away from the private beach. With expansive unit types, evenly spread out for residents' ultimate privacy, your home is an exclusive sanctuary of calmness, inspired by the open sea and meticulous design.

DISCLAIMER
1. This façade is subjected to minor amendments without prior notice. 2. Specification, materials and/or colors might be changed based on the final design and material availability, actual unit finishings for front windows, balconies, terraces, area, facade and exterior trim may vary by elevation styles and floor level. 3. This façade is for illustrative purposes. 4. Pools & Car parking canopies are not included.

Masterplan

"A Water-Front PARADISE
ELEVATING NEW STANDARDS
OF HEIGHTENED *Luxury*"



- ① MAIN GATE
- ② SECONDARY GATE
- ③ COMMERCIAL AREA
- ④ BOUTIQUE HOTEL
- ⑤ BEACH HOTEL
- ⑥ CLUBHOUSE
- ⑦ LAGOON BEACH
- ⑧ SPORTS AREA
- ⑨ BEACH CLUB
- ⑩ BEACH SPORTS AREA
- ⑪ BEACH PORTAL

DISCLAIMER
1. Actual spaces areas may vary from the stated area in the floor plan. 2. Drawings are not to scale.
3. The developer reserves the right to make technical revisions, without notices. 4. Each garden or plot shape may vary based on the location of the unit in the masterplan.



DISCLAIMER
1. Actual spaces areas may vary from the stated area in the masterplan. 2. Drawings are not to scale.
3. The developer reserves the right to make technical revisions, without notices. 4. Each garden or plot shape may vary based on the location of the dune in the

AN ABUNDANT COASTAL ESCAPE

Amenities & Facilities



Inspiring Memorable
Summer Tales, Your Way



The Beach

DISCLAIMER
1. This façade is subjected to minor amendments without prior notice. 2. Specification, materials and/or colors might be changed based on the final design and material availability, actual unit finishes for front windows, porches, Terraces Area, loggia and exterior trim may vary by elevation styles and floor level. 3. This façade is for illustrative purposes. 4. Pools & Car parking canopies are not included.

Amenities & Facilities

Sun-SOAKED ENJOYMENT AS FAR AS YOU CAN '*Sea*'

Escape to a 1 km beachfront where the feel of sand between your toes, and the warmth of the sun on your skin create a more rejuvenated you. Spend the day in the Beach Clubhouse lounging and tanning with a cocktail in hand, then take a dip in turquoise waters to refresh. In between, enjoy a nice game by the beach, as your kids play safely in a dedicated area next door. When the sun sets, watch as the sky casts a peaceful glow over a variety of fine dining restaurants, inviting you to indulge in exquisite dishes and fresh catches of the day.



Swimmable Lagoons

DISCLAIMER
1. This façade is subjected to minor amendments without prior notice. 2. Specification, materials and/or colors might be changed based on the final design and material availability, actual unit finishings for front windows, loggia, terrace area, loggia and exterior trim may vary by elevation styles and floor level. 3. This façade is for illustrative purposes. 4. Pools & Car parking canopies are not included.

Amenities & Facilities

Water-Filled MEMORIES FOR ONE AND *Everyone*

Beat the summer heat with more than 115,000 m² of swimmable lagoons, crowning the heart of Solaré to frame a private view for every home while welcoming the public to splash in waves of recreation at their door. Directly opening onto water views, the lagoons are imaginatively designed on varied heights to capture an Italian ambience like that of Positano, offering residents' the opportunity to share water-filled memories or simply unwind in ultimate privacy.



Amenities & Facilities

One Place To
Energize, Relax, Indulge Or Work

Kick-start your summer morning in the Lagoon Club House's in-door gym, fueled by 60,000 m² of mesmerizing lagoon views. Next, a yoga class in a spotless studio to free your mind, followed by a delicious meal at an exquisite restaurant, offering impeccable service and colorful dishes to die for. For unusual business, retreat to an inspiring co-working space and get things off your to-do-list. Before heading home, stop by the convenience store to grab all your daily necessities and buy your peace of mind.

Central Clubhouse

DISCLAIMER
1. This façade is subjected to minor amendments without prior notice. 2. Specification, materials and/or colors might be changed based on the final design and material availability, actual unit finishings for front windows, porches, Terraces Area, loggia and exterior trim may vary by elevation styles and floor level. 3. This façade is for illustrative purposes. 4. Pools & Car parking canopies are not included.



Italian-Inspired Commercial Area

Amenities & Facilities

THE BEST OF *Italy* EXCLUSIVELY YOURS

Set your taste buds on a culinary adventure, guaranteeing to travel with your senses across Italy through boutique restaurants, reminiscent of its charming corners. Enjoy a moonlit stroll down narrow cobblestone streets, as you indulge in cozy cafes with a larger than life spirit. Join friends to uncover a treasure-trove of Italian culture, comprising high-end brands and inspirational art galleries or simply dance the night away to uplifting music performances, paying tribute to Italy's sweet lifestyle of La Dolce Vita!



World-Class Hospitality

Amenities & Facilities

WORLDS OF LAVISH *Hospitality*
AT YOUR FINGERTIPS

Step into havens of unrivaled comfort and limitless sophistication, providing guests with an unforgettable experience of pampering and true indulgence. Designed with varied guest needs in mind, the destination offers two world-class hotels to cater to those seeking ultimate serenity near the beach or wishing to be at the centerstage of lively happenings near the commercial area. Both hotels set new standards in design-led luxury with their refined attention to details, spacious rooms, gourmet amenities and stunning views.



Organic Water Bodies

Amenities & Facilities

A *Tropical* EXPERIENCE ONE STEP AWAY

Solaré boasts 20 picturesque pools, welcoming you to take in panoramic views of the entire destination, perfected by lush landscapes and infinite sea views. Lounge on a comfortable sun bed and soak up the sun or take a refreshing dip in crystal clear waters and allow the beautiful landscaping to soothe your soul.



Sports Area

Amenities & Facilities

A HOT SPOT FOR *Sports* ENTHUSIASTS

Staying active on your Summer vacation is an easy commitment with Solaré's Sports Zone. Whether you're an amateur or a skilled professional, you'll be encouraged to unleash your athletic beast, scoring goals in a state-of-the-art football court or competing in an exciting paddle match with friends and family. A multi-purpose court is also available for kids and adults to break a sweat while enjoying a mood elevating backdrop. In between, the Sports Zone is lined with food trucks of all sorts, welcoming you to snack or simply indulge in a full meal.



UNIQUE ARCHITECTURAL DESIGN



Italian design is the poetry of *Art*,
a *Sophisticated* way of life.

DISCLAIMER
1. This façade is subjected to minor amendments without prior notice. 2. Specification, materials and/or colors might be changed based on the final design and material availability, actual unit finishings for front windows, porches, Terraces Area, loggia and exterior trim may vary by elevation styles and floor level. 3. This façade is for illustrative purposes. 4. Pools & Car parking canopies are not included.



Unique Architectural Design

AN AESTHETIC UNION
OF LIMITLESS FUNCTIONALITY
& *Uninterrupted Beauty*

Your home at Solaré is a mediterranean masterpiece, blending art, innovation and nature under one impressive roof. With contemporary facades, utilizing authentic stones, every unit harmoniously contrasts with surrounding turquoise views to evoke an air of signature luxury and divine beauty. Characterized by impressive arches, functionally integrated with emphasis on symmetry and proportion, every home is an oasis of calm, welcoming ample daylight inside your living room, as well as the magnificent outdoors.

DISCLAIMER
1. This façade is subjected to minor amendments without prior notice. 2. Specification, materials and/or colors might be changed based on the final design and material availability, actual unit finishings for front windows, porches, Terraces Area, loggia and exterior trim may vary by elevation styles and floor level. 3. This façade is for illustrative purposes. 4. Pools & Car parking canopies are not included.



DISCLAIMER:
1. Actual base map is not taken from the state and is only the Base map. 2. Drawings are not to scale.
3. The developer reserves the right to make technical revisions without notice. 4. Each garden area is not to scale and is based on the location of the unit on the master plan.



JOURNEY THROUGH SOLARÉ

Zones

Zones

Lumera

WATER CHALETS

Designed with lush landscapes in mind, Lumera Water Chalets are an exclusive opportunity to forge an uninterrupted connection with the natural world, while enjoying waterviews beauty in every form. Contemporary, crisp and more than what meets the eye, Lumera takes luxury living to new heights, perfected by shimmering pools and soothing water features, evoking timeless sentiments of calmness.



DISCLAIMER
1. This façade is subjected to minor amendments without prior notice. 2. Specification, materials and/or colors might be changed based on the final design and material availability; actual unit fittings and/or finishes, doors, porches, terraces area, loggias and exterior trim may vary by elevation styles and floor level. 3. This façade is for illustrative purposes. Pools & Car parking canopies are not included.



Perfected by shimmering Pools

DISCLAIMER
1. This façade is subjected to minor amendments without prior notice. 2. Specification, materials and/or colors might be changed based on the final design and material availability, actual unit finishings for front windows, porches, Terraces Area, loggia and exterior trim may vary by elevation styles and floor level. 3. This façade is for illustrative purposes. 4. Pools & Car parking canopies are not included.

Lumera
WATER CHALETS

LUMERA WATER CHALETS
TYPE A

LUMERA WATER CHALETS

TYPE A



FRONT

DISCLAIMER
1. This façade is subjected to minor amendments without prior notice. 2. Specification, materials and/or colors might be changed based on the final design and material availability, actual unit finishings for front windows, porches, Terraces Area, loggia and exterior trim may vary by elevation styles and floor level. 3. This façade is for illustrative purposes. 4. Pools & Car parking canopies are not included.

LUMERA WATER CHALETS

TYPE A

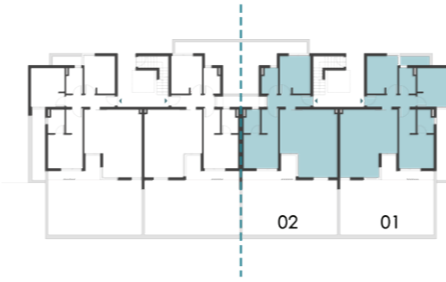


BACK

DISCLAIMER
 1. This façade is subjected to minor amendments without prior notice. 2. Specification, materials and/or colors might be changed based on the final design and material availability, actual unit finishings for front windows, porches, Terraces Area, loggia and exterior trim may vary by elevation styles and floor level. 3. This façade is for illustrative purposes. 4. Pools & Car parking canopies are not included.

LUMERA WATER CHALETS

TYPE A GROUND FLOOR



UNIT 01

3 – BEDROOM CHALET

INTERNAL AREA **119.6 m²**

TERRACES AREA **7.1 m²**

TOTAL AREA **126.7 m²**

UNIT 02

2 – BEDROOM CHALET

INTERNAL AREA **102.2 m²**

TERRACES AREA **7.2 m²**

TOTAL AREA **109.4 m²**

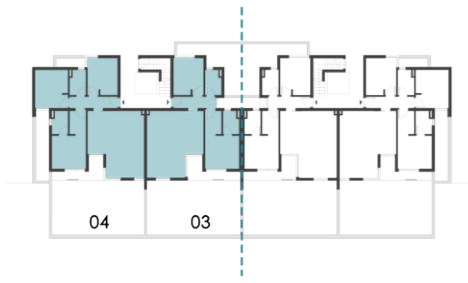


DISCLAIMER
 1. All rooms dimensions are measured to structural elements and exclude wall finished and construction tolerances. 2. All materials, dimensions and drawings are approximate, information subject to change without notice. 3. Actual areas may vary from the-stated area, Drawings not to scale. The developer reserves the right to make revisions. 4. Actual front windows, porches, terraces, loggia and exterior trim detail may vary by elevation styles and floor level. 5. Pools & Car parking canopies are not included. 6. Unit exact orientation and mirror, if any are according to the technical Contract Appendix and detailed master plan. The above is only for illustrative Purposes

LUMERA WATER CHALETS

TYPE A

GROUND FLOOR



UNIT 03

2 – BEDROOM CHALET

INTERNAL AREA **102.2 m²**

TERRACES AREA **7.2 m²**

TOTAL AREA **109.4 m²**

UNIT 04

3 – BEDROOM CHALET

INTERNAL AREA **119.6 m²**

TERRACES AREA **7.1 m²**

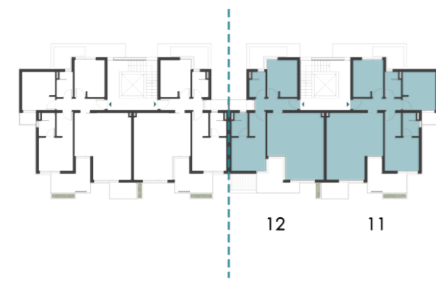
TOTAL AREA **126.7 m²**



DISCLAIMER
 1. All rooms dimensions are measured to structural elements and exclude wall finished and construction tolerances. 2. All materials, dimensions and drawings are approximate, information subject to change without notice. 3. Actual areas may vary from the-stated area, Drawings not to scale. The developer reserves the right to make revisions. 4. Actual front windows, porches, terraces, loggia and exterior trim detail may vary by elevation styles and floor level. 5. Pools & Car parking canopies are not included. 6. Unit exact orientation and mirror, if any are according to the technical Contract Appendix and detailed master plan. The above is only for Illustrative Purposes

LUMERA WATER CHALETS

TYPE A FIRST FLOOR



UNIT 11 3 – BEDROOM CHALET

INTERNAL AREA **120.4 m²**
 TERRACES AREA **17.1 m²**
 TOTAL AREA **137.5 m²**

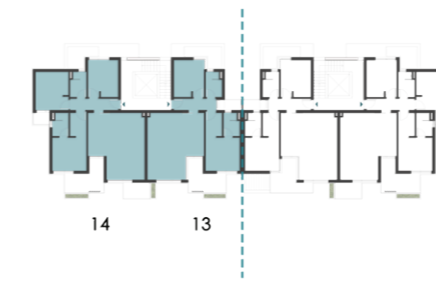
UNIT 12 2 – BEDROOM CHALET

INTERNAL AREA **102.3 m²**
 TERRACES AREA **12.2 m²**
 TOTAL AREA **114.5 m²**



LUMERA WATER CHALETS

TYPE A FIRST FLOOR



UNIT 13 2 – BEDROOM CHALET

INTERNAL AREA **102.4 m²**
 TERRACES AREA **12.7 m²**
 TOTAL AREA **115.1 m²**

UNIT 14 3 – BEDROOM CHALET

INTERNAL AREA **120.4 m²**
 TERRACES AREA **17.1 m²**
 TOTAL AREA **137.5 m²**

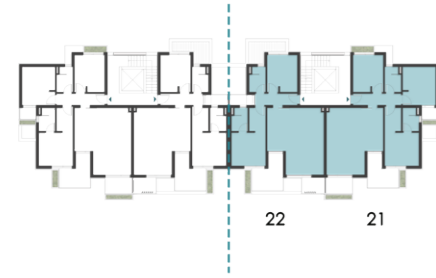


DISCLAIMER
 1. All rooms dimensions are measured to structural elements and exclude wall finished and construction tolerances. 2. All materials, dimensions and drawings are approximate, information subject to change without notice. 3. Actual areas may vary from the-stated area, Drawings not to scale. The developer reserves the right to make revisions. 4. Actual front windows, porches, terraces, loggia and exterior trim detail may vary by elevation styles and floor level. 5. Pools & Car parking canopies are not included. 6. Unit exact orientation and mirror, if any are according to the technical Contract Appendix and detailed master plan. The above is only for Illustrative Purposes

DISCLAIMER
 1. All rooms dimensions are measured to structural elements and exclude wall finished and construction tolerances. 2. All materials, dimensions and drawings are approximate, information subject to change without notice. 3. Actual areas may vary from the-stated area, Drawings not to scale. The developer reserves the right to make revisions. 4. Actual front windows, porches, terraces, loggia and exterior trim detail may vary by elevation styles and floor level. 5. Pools & Car parking canopies are not included. 6. Unit exact orientation and mirror, if any are according to the technical Contract Appendix and detailed master plan. The above is only for Illustrative Purposes

LUMERA WATER CHALETS

TYPE A SECOND FLOOR



UNIT 21 3 – BEDROOM CHALET

INTERNAL AREA **120.2 m²**
 TERRACES AREA **15.5 m²**
 TOTAL AREA **135.7 m²**

UNIT 22 2 – BEDROOM CHALET

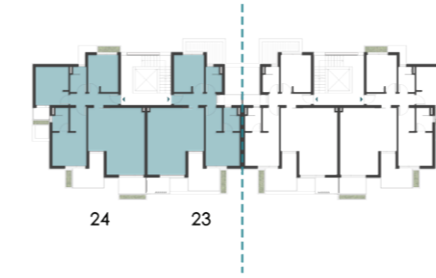
INTERNAL AREA **102.8 m²**
 TERRACES AREA **16.4 m²**
 TOTAL AREA **119.2 m²**



DISCLAIMER
 1. All rooms dimensions are measured to structural elements and exclude wall finished and construction tolerances. 2. All materials, dimensions and drawings are approximate, information subject to change without notice. 3. Actual areas may vary from the-stated area, Drawings not to scale. The developer reserves the right to make revisions. 4. Actual front windows, porches, terraces, loggia and exterior trim detail may vary by elevation styles and floor level. 5. Pools & Car parking canopies are not included. 6. Unit exact orientation and mirror, if any are according to the technical Contract Appendix and detailed master plan. The above is only for Illustrative Purposes

LUMERA WATER CHALETS

TYPE A SECOND FLOOR



UNIT 23 2 – BEDROOM CHALET

INTERNAL AREA **102.8 m²**
 TERRACES AREA **16.4 m²**
 TOTAL AREA **119.2 m²**

UNIT 24 3 – BEDROOM CHALET

INTERNAL AREA **120.2 m²**
 TERRACES AREA **15.5 m²**
 TOTAL AREA **135.7 m²**



DISCLAIMER
 1. All rooms dimensions are measured to structural elements and exclude wall finished and construction tolerances. 2. All materials, dimensions and drawings are approximate, information subject to change without notice. 3. Actual areas may vary from the-stated area, Drawings not to scale. The developer reserves the right to make revisions. 4. Actual front windows, porches, terraces, loggia and exterior trim detail may vary by elevation styles and floor level. 5. Pools & Car parking canopies are not included. 6. Unit exact orientation and mirror, if any are according to the technical Contract Appendix and detailed master plan. The above is only for Illustrative Purposes

Lumera
WATER CHALETS

LUMERA WATER CHALETS

TYPE C

LUMERA WATER CHALETS

TYPE C



FRONT

DISCLAIMER
1. This façade is subjected to minor amendments without prior notice. 2. Specification, materials and/or colors might be changed based on the final design and material availability, actual unit finishings for front windows, porches, Terraces Area, loggia and exterior trim may vary by elevation styles and floor level. 3. This façade is for illustrative purposes. 4. Pools & Car parking canopies are not included.

LUMERA WATER CHALETS

TYPE C

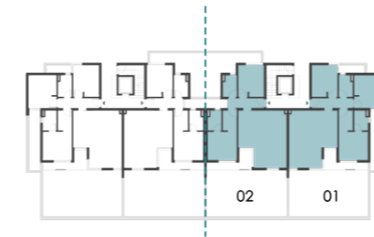


BACK

DISCLAIMER
 1. This façade is subjected to minor amendments without prior notice. 2. Specification, materials and/or colors might be changed based on the final design and material availability, actual unit finishings for front windows, porches, Terraces Area, loggia and exterior trim may vary by elevation styles and floor level. 3. This façade is for illustrative purposes. 4. Pools & Car parking canopies are not included.

LUMERA WATER CHALETS

TYPE C
 GROUND FLOOR



UNIT 01

3 – BEDROOM CHALET

INTERNAL AREA **118.9 m²**

TERRACES AREA **7.1 m²**

TOTAL AREA **126.0 m²**

UNIT 02

2 – BEDROOM CHALET

INTERNAL AREA **101.7 m²**

TERRACES AREA **7.2 m²**

TOTAL AREA **108.9 m²**

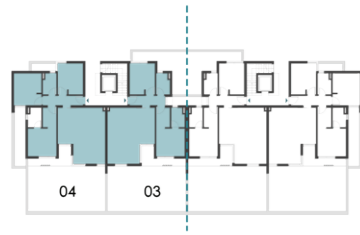


DISCLAIMER
 1. All rooms dimensions are measured to structural elements and exclude wall finished and construction tolerances. 2. All materials, dimensions and drawings are approximate, information subject to change without notice. 3. Actual areas may vary from the-stated area, Drawings not to scale. The developer reserves the right to make revisions. 4. Actual front windows, porches, terraces, loggia and exterior trim detail may vary by elevation styles and floor level. 5. Pools & Car parking canopies are not included. 6. Unit exact orientation and mirror, if any are according to the technical Contract Appendix and detailed master plan. The above is only for illustrative Purposes

LUMERA WATER CHALETS

TYPE C

GROUND FLOOR



UNIT 03

2 – BEDROOM CHALET

INTERNAL AREA **101.7 m²**

TERRACES AREA **7.2 m²**

TOTAL AREA **108.9 m²**

UNIT 04

3 – BEDROOM CHALET

INTERNAL AREA **118.9 m²**

TERRACES AREA **7.1 m²**

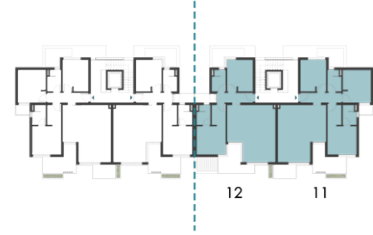
TOTAL AREA **126.0 m²**



DISCLAIMER
 1. All rooms dimensions are measured to structural elements and exclude wall finished and construction tolerances. 2. All materials, dimensions and drawings are approximate, information subject to change without notice. 3. Actual areas may vary from the-stated area, Drawings not to scale. The developer reserves the right to make revisions. 4. Actual front windows, porches, terraces, loggia and exterior trim detail may vary by elevation styles and floor level. 5. Pools & Car parking canopies are not included. 6. Unit exact orientation and mirror, if any are according to the technical Contract Appendix and detailed master plan. The above is only for Illustrative Purposes

LUMERA WATER CHALETS

TYPE C
FIRST FLOOR



UNIT 11 3 – BEDROOM CHALET

INTERNAL AREA **119.7 m²**
TERRACES AREA **17.1 m²**
TOTAL AREA **136.8 m²**

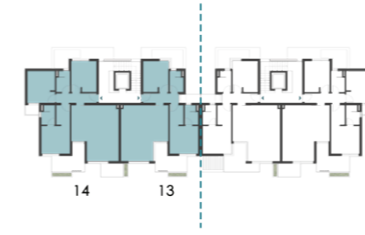
UNIT 12 2 – BEDROOM CHALET

INTERNAL AREA **101.8 m²**
TERRACES AREA **12.2 m²**
TOTAL AREA **114.0 m²**



LUMERA WATER CHALETS

TYPE C
FIRST FLOOR



UNIT 13 2 – BEDROOM CHALET

INTERNAL AREA **101.8 m²**
TERRACES AREA **12.7 m²**
TOTAL AREA **114.5 m²**

UNIT 14 3 – BEDROOM CHALET

INTERNAL AREA **119.7 m²**
TERRACES AREA **17.1 m²**
TOTAL AREA **136.8 m²**

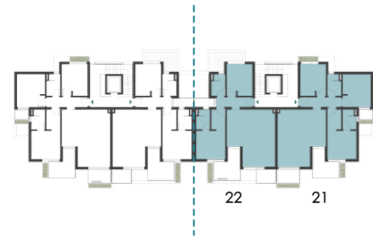


DISCLAIMER
1. All rooms dimensions are measured to structural elements and exclude wall finished and construction tolerances. 2. All materials, dimensions and drawings are approximate, information subject to change without notice. 3. Actual areas may vary from the-stated area, Drawings not to scale. The developer reserves the right to make revisions. 4. Actual front windows, porches, terraces, loggia and exterior trim detail may vary by elevation styles and floor level. 5. Pools & Car parking canopies are not included. 6. Unit exact orientation and mirror, if any are according to the technical Contract Appendix and detailed master plan. The above is only for Illustrative Purposes

DISCLAIMER
1. All rooms dimensions are measured to structural elements and exclude wall finished and construction tolerances. 2. All materials, dimensions and drawings are approximate, information subject to change without notice. 3. Actual areas may vary from the-stated area, Drawings not to scale. The developer reserves the right to make revisions. 4. Actual front windows, porches, terraces, loggia and exterior trim detail may vary by elevation styles and floor level. 5. Pools & Car parking canopies are not included. 6. Unit exact orientation and mirror, if any are according to the technical Contract Appendix and detailed master plan. The above is only for Illustrative Purposes

LUMERA WATER CHALETS

TYPE C
SECOND FLOOR



UNIT 21

3 – BEDROOM CHALET

INTERNAL AREA **119.5 m²**

TERRACES AREA **15.5 m²**

TOTAL AREA **135.0 m²**

UNIT 22

2 – BEDROOM CHALET

INTERNAL AREA **102.2 m²**

TERRACES AREA **16.4 m²**

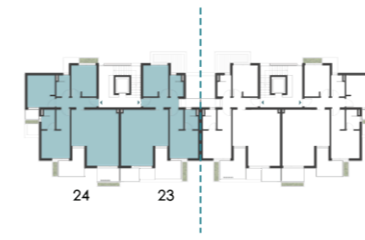
TOTAL AREA **118.6 m²**



DISCLAIMER
1. All rooms dimensions are measured to structural elements and exclude wall finished and construction tolerances. 2. All materials, dimensions and drawings are approximate, information subject to change without notice. 3. Actual areas may vary from the-stated area, Drawings not to scale. The developer reserves the right to make revisions. 4. Actual front windows, porches, terraces, loggia and exterior trim detail may vary by elevation styles and floor level. 5. Pools & Car parking canopies are not included. 6. Unit exact orientation and mirror, if any are according to the technical Contract Appendix and detailed master plan. The above is only for Illustrative Purposes

LUMERA WATER CHALETS

TYPE C
SECOND FLOOR



UNIT 23

2 – BEDROOM CHALET

INTERNAL AREA **102.2 m²**

TERRACES AREA **16.4 m²**

TOTAL AREA **118.6 m²**

UNIT 24

3 – BEDROOM CHALET

INTERNAL AREA **119.5 m²**

TERRACES AREA **15.5 m²**

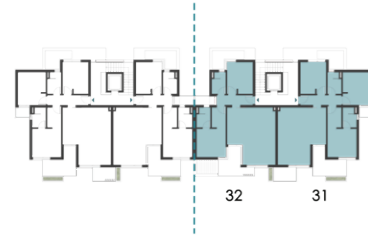
TOTAL AREA **135.0 m²**



DISCLAIMER
1. All rooms dimensions are measured to structural elements and exclude wall finished and construction tolerances. 2. All materials, dimensions and drawings are approximate, information subject to change without notice. 3. Actual areas may vary from the-stated area, Drawings not to scale. The developer reserves the right to make revisions. 4. Actual front windows, porches, terraces, loggia and exterior trim detail may vary by elevation styles and floor level. 5. Pools & Car parking canopies are not included. 6. Unit exact orientation and mirror, if any are according to the technical Contract Appendix and detailed master plan. The above is only for Illustrative Purposes

LUMERA WATER CHALETS

TYPE C
THIRD FLOOR



UNIT 31
3 – BEDROOM CHALET

INTERNAL AREA **119.7 m²**
TERRACES AREA **17.1 m²**
TOTAL AREA **136.8 m²**

UNIT 32
2 – BEDROOM CHALET

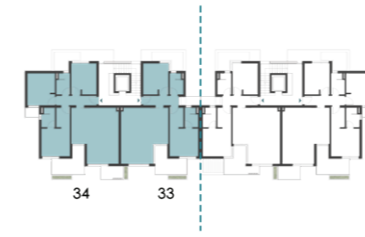
INTERNAL AREA **101.8 m²**
TERRACES AREA **12.2 m²**
TOTAL AREA **114.0 m²**



DISCLAIMER
1. All rooms dimensions are measured to structural elements and exclude wall finished and construction tolerances. 2. All materials, dimensions and drawings are approximate, information subject to change without notice. 3. Actual areas may vary from the-stated area, Drawings not to scale. The developer reserves the right to make revisions. 4. Actual front windows, porches, terraces, loggia and exterior trim detail may vary by elevation styles and floor level. 5. Pools & Car parking canopies are not included. 6. Unit exact orientation and mirror, if any are according to the technical Contract Appendix and detailed master plan. The above is only for Illustrative Purposes

LUMERA WATER CHALETS

TYPE C
THIRD FLOOR



UNIT 33
2 – BEDROOM CHALET

INTERNAL AREA **101.8 m²**
TERRACES AREA **12.7 m²**
TOTAL AREA **114.5 m²**

UNIT 34
3 – BEDROOM CHALET

INTERNAL AREA **119.7 m²**
TERRACES AREA **17.1 m²**
TOTAL AREA **136.8 m²**



DISCLAIMER
1. All rooms dimensions are measured to structural elements and exclude wall finished and construction tolerances. 2. All materials, dimensions and drawings are approximate, information subject to change without notice. 3. Actual areas may vary from the-stated area, Drawings not to scale. The developer reserves the right to make revisions. 4. Actual front windows, porches, terraces, loggia and exterior trim detail may vary by elevation styles and floor level. 5. Pools & Car parking canopies are not included. 6. Unit exact orientation and mirror, if any are according to the technical Contract Appendix and detailed master plan. The above is only for Illustrative Purposes

INTERIORS



Disclaimer: 1. All materials, specification, colors and furniture are tentative, and subjected to changes and alteration without notice depending on availability of specified materials, specification and/or colors.
2. Finishing and furniture are according to the specs in Contract Appendix. The above is only for Illustrative Purposes



Disclaimer: 1. All materials, specification, colors and furniture are tentative, and subjected to changes and alteration without notice depending on availability of specified materials, specification and/or colors.
2. Finishing and furniture are according to the specs in Contract Appendix. The above is only for Illustrative Purposes



Lumera
WATER CHALETS

LUMERA WATER CHALETS
TYPE B

LUMERA WATER CHALETS

TYPE B



FRONT

DISCLAIMER
1. This façade is subjected to minor amendments without prior notice. 2. Specification, materials and/or colors might be changed based on the final design and material availability, actual unit finishings for front windows, porches, Terraces Area, loggia and exterior trim may vary by elevation styles and floor level. 3. This façade is for illustrative purposes. 4. Pools & Car parking canopies are not included.

LUMERA WATER CHALETS

TYPE B

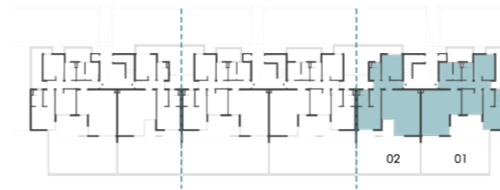


BACK

DISCLAIMER
 1. This façade is subjected to minor amendments without prior notice. 2. Specification, materials and/or colors might be changed based on the final design and material availability, actual unit finishings for front windows, porches, Terraces Area, loggia and exterior trim may vary by elevation styles and floor level. 3. This façade is for illustrative purposes. 4. Pools & Car parking canopies are not included.

LUMERA WATER CHALETS

TYPE B GROUND FLOOR



UNIT 01 SENIOR CHALET

INTERNAL AREA **133.3 m²**
 TERRACES AREA **15.8 m²**
 TOTAL AREA **149.1 m²**

UNIT 02 2 – BEDROOM CHALET

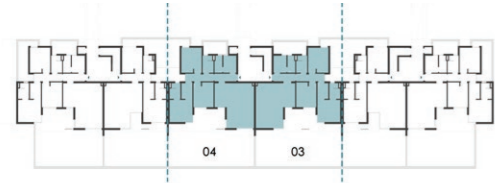
INTERNAL AREA **101.3 m²**
 TERRACES AREA **7.2 m²**
 TOTAL AREA **108.5 m²**

DISCLAIMER
 1. All rooms dimensions are measured to structural elements and exclude wall finished and construction tolerances. 2. All materials, dimensions and drawings are approximate, information subject to change without notice. 3. Actual areas may vary from the-stated area, Drawings not to scale. The developer reserves the right to make revisions. 4. Actual front windows, porches, terraces, loggia and exterior trim detail may vary by elevation styles and floor level. 5. Pools & Car parking canopies are not included. 6. Unit exact orientation and mirror, if any are according to the technical Contract Appendix and detailed master plan. The above is only for illustrative Purposes



LUMERA WATER CHALETS

TYPE B
GROUND FLOOR



UNIT 03 SENIOR CHALET

INTERNAL AREA **133.8 m²**
TERRACES AREA **18.3 m²**
TOTAL AREA **152.1 m²**

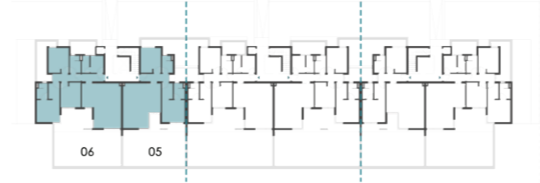
UNIT 04 SENIOR CHALET

INTERNAL AREA **133.8 m²**
TERRACES AREA **18.3 m²**
TOTAL AREA **152.1 m²**



LUMERA WATER CHALETS

TYPE B
GROUND FLOOR



UNIT 05 2 - BEDROOM CHALET

INTERNAL AREA **101.3 m²**
TERRACES AREA **7.2 m²**
TOTAL AREA **108.5 m²**

UNIT 06 SENIOR CHALET

INTERNAL AREA **133.3 m²**
TERRACES AREA **15.8 m²**
TOTAL AREA **149.1 m²**

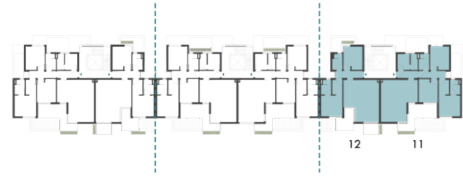


DISCLAIMER
1. All rooms dimensions are measured to structural elements and exclude wall finished and construction tolerances. 2. All materials, dimensions and drawings are approximate, information subject to change without notice. 3. Actual areas may vary from the-stated area, Drawings not to scale. The developer reserves the right to make revisions. 4. Actual front windows, porches, terraces, loggia and exterior trim detail may vary by elevation styles and floor level. 5. Pools & Car parking canopies are not included. 6. Unit exact orientation and mirror, if any are according to the technical Contract Appendix and detailed master plan. The above is only for Illustrative Purposes

DISCLAIMER
1. All rooms dimensions are measured to structural elements and exclude wall finished and construction tolerances. 2. All materials, dimensions and drawings are approximate, information subject to change without notice. 3. Actual areas may vary from the-stated area, Drawings not to scale. The developer reserves the right to make revisions. 4. Actual front windows, porches, terraces, loggia and exterior trim detail may vary by elevation styles and floor level. 5. Pools & Car parking canopies are not included. 6. Unit exact orientation and mirror, if any are according to the technical Contract Appendix and detailed master plan. The above is only for Illustrative Purposes

LUMERA WATER CHALETS

TYPE B
FIRST FLOOR



UNIT 11
SENIOR CHALET

INTERNAL AREA **133.1 m²**
TERRACES AREA **15.3 m²**
TOTAL AREA **148.4 m²**

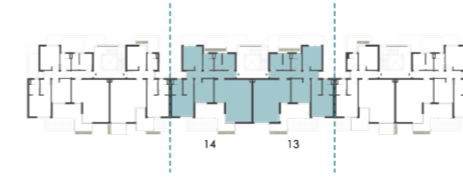
UNIT 12
2 - BEDROOM CHALET

INTERNAL AREA **101.7 m²**
TERRACES AREA **15.5 m²**
TOTAL AREA **117.2 m²**



LUMERA WATER CHALETS

TYPE B
FIRST FLOOR



UNIT 13
SENIOR CHALET

INTERNAL AREA **133.4 m²**
TERRACES AREA **18.0 m²**
TOTAL AREA **151.4 m²**

UNIT 14
SENIOR CHALET

INTERNAL AREA **133.4 m²**
TERRACES AREA **18.0 m²**
TOTAL AREA **151.4 m²**

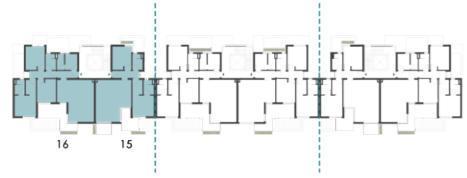


DISCLAIMER
1. All rooms dimensions are measured to structural elements and exclude wall finished and construction tolerances. 2. All materials, dimensions and drawings are approximate, information subject to change without notice. 3. Actual areas may vary from the-stated area, Drawings not to scale. The developer reserves the right to make revisions. 4. Actual front windows, porches, terraces, loggia and exterior trim detail may vary by elevation styles and floor level. 5. Pools & Car parking canopies are not included. 6. Unit exact orientation and mirror, if any are according to the technical Contract Appendix and detailed master plan. The above is only for Illustrative Purposes

DISCLAIMER
1. All rooms dimensions are measured to structural elements and exclude wall finished and construction tolerances. 2. All materials, dimensions and drawings are approximate, information subject to change without notice. 3. Actual areas may vary from the-stated area, Drawings not to scale. The developer reserves the right to make revisions. 4. Actual front windows, porches, terraces, loggia and exterior trim detail may vary by elevation styles and floor level. 5. Pools & Car parking canopies are not included. 6. Unit exact orientation and mirror, if any are according to the technical Contract Appendix and detailed master plan. The above is only for Illustrative Purposes

LUMERA WATER CHALETS

TYPE B FIRST FLOOR



UNIT 15 2 – BEDROOM CHALET

INTERNAL AREA **101.7 m²**
 TERRACES AREA **15.5 m²**
 TOTAL AREA **117.2 m²**

UNIT 16 SENIOR CHALET

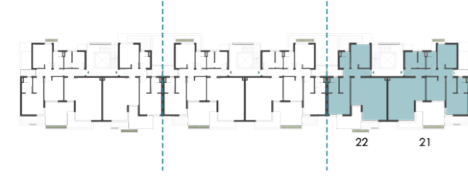
INTERNAL AREA **133.1 m²**
 TERRACES AREA **15.3 m²**
 TOTAL AREA **148.4 m²**



DISCLAIMER
 1. All rooms dimensions are measured to structural elements and exclude wall finished and construction tolerances. 2. All materials, dimensions and drawings are approximate, information subject to change without notice. 3. Actual areas may vary from the-stated area, Drawings not to scale. The developer reserves the right to make revisions. 4. Actual front windows, porches, terraces, loggia and exterior trim detail may vary by elevation styles and floor level. 5. Pools & Car parking canopies are not included. 6. Unit exact orientation and mirror, if any are according to the technical Contract Appendix and detailed master plan. The above is only for Illustrative Purposes

LUMERA WATER CHALETS

TYPE B
SECOND FLOOR



UNIT 21
SENIOR CHALET

INTERNAL AREA **133.4 m²**
TERRACES AREA **17.7 m²**
TOTAL AREA **151.1 m²**

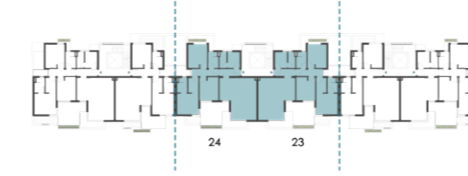
UNIT 22
2 - BEDROOM CHALET

INTERNAL AREA **101.5 m²**
TERRACES AREA **13.2 m²**
TOTAL AREA **114.7 m²**



LUMERA WATER CHALETS

TYPE B
SECOND FLOOR



UNIT 23
SENIOR CHALET

INTERNAL AREA **133.4 m²**
TERRACES AREA **17.7 m²**
TOTAL AREA **151.1 m²**

UNIT 24
SENIOR CHALET

INTERNAL AREA **133.4 m²**
TERRACES AREA **17.7 m²**
TOTAL AREA **151.1 m²**



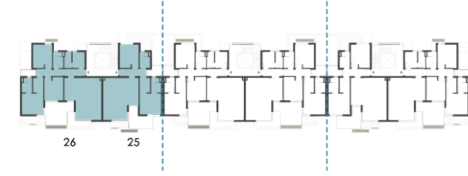
DISCLAIMER
1. All rooms dimensions are measured to structural elements and exclude wall finished and construction tolerances. 2. All materials, dimensions and drawings are approximate, information subject to change without notice. 3. Actual areas may vary from the-stated area, Drawings not to scale. The developer reserves the right to make revisions. 4. Actual front windows, porches, terraces, loggia and exterior trim detail may vary by elevation styles and floor level. 5. Pools & Car parking canopies are not included. 6. Unit exact orientation and mirror, if any are according to the technical Contract Appendix and detailed master plan. The above is only for Illustrative Purposes

DISCLAIMER
1. All rooms dimensions are measured to structural elements and exclude wall finished and construction tolerances. 2. All materials, dimensions and drawings are approximate, information subject to change without notice. 3. Actual areas may vary from the-stated area, Drawings not to scale. The developer reserves the right to make revisions. 4. Actual front windows, porches, terraces, loggia and exterior trim detail may vary by elevation styles and floor level. 5. Pools & Car parking canopies are not included. 6. Unit exact orientation and mirror, if any are according to the technical Contract Appendix and detailed master plan. The above is only for Illustrative Purposes

LUMERA WATER CHALETS

TYPE B

SECOND FLOOR



UNIT 25

2 – BEDROOM CHALET

INTERNAL AREA **101.5 m²**

TERRACES AREA **13.2 m²**

TOTAL AREA **114.7 m²**

UNIT 26

SENIOR CHALET

INTERNAL AREA **133.4 m²**

TERRACES AREA **17.7 m²**

TOTAL AREA **151.1 m²**



DISCLAIMER
 1. All rooms dimensions are measured to structural elements and exclude wall finished and construction tolerances. 2. All materials, dimensions and drawings are approximate, information subject to change without notice. 3. Actual areas may vary from the-stated area, Drawings not to scale. The developer reserves the right to make revisions. 4. Actual front windows, porches, terraces, loggia and exterior trim detail may vary by elevation styles and floor level. 5. Pools & Car parking canopies are not included. 6. Unit exact orientation and mirror, if any are according to the technical Contract Appendix and detailed master plan. The above is only for Illustrative Purposes

Lumera
WATER CHALETS

LUMERA WATER CHALETS

TYPE D

LUMERA WATER CHALETS

TYPE D



FRONT

DISCLAIMER

1. This façade is subjected to minor amendments without prior notice. 2. Specification, materials and/or colors might be changed based on the final design and material availability, actual unit finishings for front windows, porches, Terraces Area, loggia and exterior trim may vary by elevation styles and floor level. 3. This façade is for illustrative purposes. 4. Pools & Car parking canopies are not included.

LUMERA WATER CHALETS

TYPE D



BACK

DISCLAIMER
1. This façade is subjected to minor amendments without prior notice. 2. Specification, materials and/or colors might be changed based on the final design and material availability, actual unit finishings for front windows, porches, Terraces Area, loggia and exterior trim may vary by elevation styles and floor level. 3. This façade is for illustrative purposes. 4. Pools & Car parking canopies are not included.

LUMERA WATER CHALETS

TYPE D
GROUND FLOOR



UNIT 01
SENIOR CHALET
INTERNAL AREA **132.6 m²**
TERRACES AREA **15.8 m²**
TOTAL AREA **148.4 m²**

UNIT 02
2 - BEDROOM CHALET
INTERNAL AREA **100.8 m²**
TERRACES AREA **7.2 m²**
TOTAL AREA **108.0 m²**



DISCLAIMER
1. All rooms dimensions are measured to structural elements and exclude wall finished and construction tolerances. 2. All materials, dimensions and drawings are approximate, information subject to change without notice. 3. Actual areas may vary from the-stated area, Drawings not to scale. The developer reserves the right to make revisions. 4. Actual front windows, porches, terraces, loggia and exterior trim detail may vary by elevation styles and floor level. 5. Pools & Car parking canopies are not included. 6. Unit exact orientation and mirror, if any are according to the technical Contract Appendix and detailed master plan. The above is only for illustrative Purposes

LUMERA WATER CHALETS

TYPE D
GROUND FLOOR



UNIT 03
SENIOR CHALET

INTERNAL AREA **133.0 m²**
TERRACES AREA **18.3 m²**
TOTAL AREA **151.3 m²**

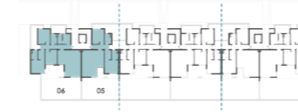
UNIT 04
SENIOR CHALET

INTERNAL AREA **133.0 m²**
TERRACES AREA **18.3 m²**
TOTAL AREA **151.3 m²**



LUMERA WATER CHALETS

TYPE D
GROUND FLOOR



UNIT 05
2-BEDROOM CHALET

INTERNAL AREA **100.8 m²**
TERRACES AREA **7.2 m²**
TOTAL AREA **108.0 m²**

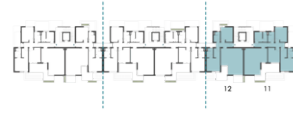
UNIT 06
SENIOR CHALET

INTERNAL AREA **132.6 m²**
TERRACES AREA **15.8 m²**
TOTAL AREA **148.4 m²**



LUMERA WATER CHALETS

TYPE D
FIRST FLOOR



UNIT 11 SENIOR CHALET

INTERNAL AREA **132.4 m²**
TERRACES AREA **15.3 m²**
TOTAL AREA **147.7 m²**

UNIT 12 2 - BEDROOM CHALET

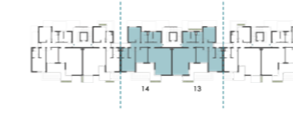
INTERNAL AREA **101.1 m²**
TERRACES AREA **15.5 m²**
TOTAL AREA **116.6 m²**



DISCLAIMER
1. All rooms dimensions are measured to structural elements and exclude wall finished and construction tolerances. 2. All materials, dimensions and drawings are approximate, information subject to change without notice. 3. Actual areas may vary from the-stated area, Drawings not to scale. The developer reserves the right to make revisions. 4. Actual front windows, porches, terraces, loggia and exterior trim detail may vary by elevation styles and floor level. 5. Pools & Car parking canopies are not included. 6. Unit exact orientation and mirror, if any are according to the technical Contract Appendix and detailed master plan. The above is only for Illustrative Purposes

LUMERA WATER CHALETS

TYPE D
FIRST FLOOR



UNIT 13 SENIOR CHALET

INTERNAL AREA **132.7 m²**
TERRACES AREA **18.0 m²**
TOTAL AREA **150.7 m²**

UNIT 14 SENIOR CHALET

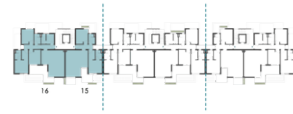
INTERNAL AREA **132.7 m²**
TERRACES AREA **18.0 m²**
TOTAL AREA **150.7 m²**



DISCLAIMER
1. All rooms dimensions are measured to structural elements and exclude wall finished and construction tolerances. 2. All materials, dimensions and drawings are approximate, information subject to change without notice. 3. Actual areas may vary from the-stated area, Drawings not to scale. The developer reserves the right to make revisions. 4. Actual front windows, porches, terraces, loggia and exterior trim detail may vary by elevation styles and floor level. 5. Pools & Car parking canopies are not included. 6. Unit exact orientation and mirror, if any are according to the technical Contract Appendix and detailed master plan. The above is only for Illustrative Purposes

LUMERA WATER CHALETS

TYPE D
FIRST FLOOR



UNIT 15

2 - BEDROOM CHALET

INTERNAL AREA **101.1 m²**

TERRACES AREA **15.5 m²**

TOTAL AREA **116.6 m²**

UNIT 16

SENIOR CHALET

INTERNAL AREA **132.4 m²**

TERRACES AREA **15.3 m²**

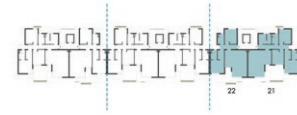
TOTAL AREA **147.7 m²**



DISCLAIMER
1. All rooms dimensions are measured to structural elements and exclude wall finished and construction tolerances. 2. All materials, dimensions and drawings are approximate, information subject to change without notice. 3. Actual areas may vary from the-stated area, Drawings not to scale. The developer reserves the right to make revisions. 4. Actual front windows, porches, terraces, loggia and exterior trim detail may vary by elevation styles and floor level. 5. Pools & Car parking canopies are not included. 6. Unit exact orientation and mirror, if any are according to the technical Contract Appendix and detailed master plan. The above is only for Illustrative Purposes

LUMERA WATER CHALETS

TYPE D
SECOND FLOOR



UNIT 21
SENIOR CHALET

INTERNAL AREA **132.6 m²**
TERRACES AREA **17.7 m²**
TOTAL AREA **150.3 m²**

UNIT 22
2 - BEDROOM CHALET

INTERNAL AREA **100.9 m²**
TERRACES AREA **13.2 m²**
TOTAL AREA **114.1 m²**



DISCLAIMER
1. All rooms dimensions are measured to structural elements and exclude wall finished and construction tolerances. 2. All materials, dimensions and drawings are approximate, information subject to change without notice. 3. Actual areas may vary from the-stated area, Drawings not to scale. The developer reserves the right to make revisions. 4. Actual front windows, porches, terraces, loggia and exterior trim detail may vary by elevation styles and floor level. 5. Pools & Car parking canopies are not included. 6. Unit exact orientation and mirror, if any are according to the technical Contract Appendix and detailed master plan. The above is only for Illustrative Purposes

LUMERA WATER CHALETS

TYPE D
SECOND FLOOR



UNIT 23
SENIOR CHALET

INTERNAL AREA **132.6 m²**
TERRACES AREA **17.7 m²**
TOTAL AREA **150.3 m²**

UNIT 24
SENIOR CHALET

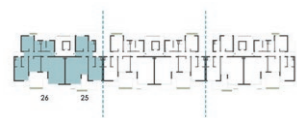
INTERNAL AREA **132.6 m²**
TERRACES AREA **17.7 m²**
TOTAL AREA **150.3 m²**



DISCLAIMER
1. All rooms dimensions are measured to structural elements and exclude wall finished and construction tolerances. 2. All materials, dimensions and drawings are approximate, information subject to change without notice. 3. Actual areas may vary from the-stated area, Drawings not to scale. The developer reserves the right to make revisions. 4. Actual front windows, porches, terraces, loggia and exterior trim detail may vary by elevation styles and floor level. 5. Pools & Car parking canopies are not included. 6. Unit exact orientation and mirror, if any are according to the technical Contract Appendix and detailed master plan. The above is only for Illustrative Purposes

LUMERA WATER CHALETS

TYPE D
SECOND FLOOR



UNIT 25

2 - BEDROOM CHALET

INTERNAL AREA **100.9 m²**
TERRACES AREA **15.3 m²**
TOTAL AREA **147.7 m²**

UNIT 26

SENIOR CHALET

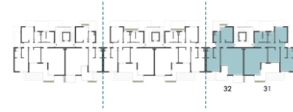
INTERNAL AREA **132.6 m²**
TERRACES AREA **17.7 m²**
TOTAL AREA **150.3 m²**



DISCLAIMER
1. All rooms dimensions are measured to structural elements and exclude wall finished and construction tolerances. 2. All materials, dimensions and drawings are approximate, information subject to change without notice. 3. Actual areas may vary from the-stated area, Drawings not to scale. The developer reserves the right to make revisions. 4. Actual front windows, porches, terraces, loggia and exterior trim detail may vary by elevation styles and floor level. 5. Pools & Car parking canopies are not included. 6. Unit exact orientation and mirror, if any are according to the technical Contract Appendix and detailed master plan. The above is only for Illustrative Purposes

LUMERA WATER CHALETS

TYPE D
THIRD FLOOR



UNIT 31 SENIOR CHALET

INTERNAL AREA **132.4 m²**
TERRACES AREA **15.3 m²**
TOTAL AREA **147.7 m²**

UNIT 32 2 - BEDROOM CHALET

INTERNAL AREA **101.1 m²**
TERRACES AREA **15.5 m²**
TOTAL AREA **116.6 m²**



DISCLAIMER
1. All rooms dimensions are measured to structural elements and exclude wall finished and construction tolerances. 2. All materials, dimensions and drawings are approximate, information subject to change without notice. 3. Actual areas may vary from the-stated area, Drawings not to scale. The developer reserves the right to make revisions. 4. Actual front windows, porches, terraces, loggia and exterior trim detail may vary by elevation styles and floor level. 5. Pools & Car parking canopies are not included. 6. Unit exact orientation and mirror, if any are according to the technical Contract Appendix and detailed master plan. The above is only for Illustrative Purposes

LUMERA WATER CHALETS

TYPE D
THIRD FLOOR



UNIT 33 SENIOR CHALET

INTERNAL AREA **132.7 m²**
TERRACES AREA **18.0 m²**
TOTAL AREA **150.7 m²**

UNIT 34 SENIOR CHALET

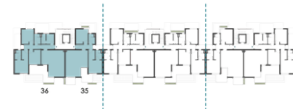
INTERNAL AREA **132.7 m²**
TERRACES AREA **18.0 m²**
TOTAL AREA **150.7 m²**



DISCLAIMER
1. All rooms dimensions are measured to structural elements and exclude wall finished and construction tolerances. 2. All materials, dimensions and drawings are approximate, information subject to change without notice. 3. Actual areas may vary from the-stated area, Drawings not to scale. The developer reserves the right to make revisions. 4. Actual front windows, porches, terraces, loggia and exterior trim detail may vary by elevation styles and floor level. 5. Pools & Car parking canopies are not included. 6. Unit exact orientation and mirror, if any are according to the technical Contract Appendix and detailed master plan. The above is only for Illustrative Purposes

LUMERA WATER CHALETS

TYPE D
THIRD FLOOR



UNIT 35

2 - BEDROOM CHALET

INTERNAL AREA **101.1 m²**

TERRACES AREA **15.5 m²**

TOTAL AREA **116.6 m²**

UNIT 36

SENIOR CHALET

INTERNAL AREA **132.4 m²**

TERRACES AREA **15.3 m²**

TOTAL AREA **147.7 m²**



DISCLAIMER

1. All rooms dimensions are measured to structural elements and exclude wall finished and construction tolerances. 2. All materials, dimensions and drawings are approximate, information subject to change without notice. 3. Actual areas may vary from the-stated area, Drawings not to scale. The developer reserves the right to make revisions. 4. Actual front windows, porches, terraces, loggia and exterior trim detail may vary by elevation styles and floor level. 5. Pools & Car parking canopies are not included. 6. Unit exact orientation and mirror, if any are according to the technical Contract Appendix and detailed master plan. The above is only for Illustrative Purposes

INTERIORS



Disclaimer: 1. All materials, specification, colors and furniture are tentative, and subjected to changes and alteration without notice depending on availability of specified materials, specification and/or colors.
2. Finishing and furniture are according to the specs in Contract Appendix. The above is only for Illustrative Purposes



Disclaimer: 1. All materials, specification, colors and furniture are tentative, and subjected to changes and alteration without notice depending on availability of specified materials, specification and/or colors.
2. Finishing and furniture are according to the specs in Contract Appendix. The above is only for Illustrative Purposes



Lumera
WATER CHALETS

LUMERA WATER CHALETS
TYPE L

LUMERA WATER CHALETS

TYPE L



FRONT

DISCLAIMER
1. This façade is subjected to minor amendments without prior notice. 2. Specification, materials and/or colors might be changed based on the final design and material availability, actual unit finishings for front windows, porches, Terraces Area, loggia and exterior trim may vary by elevation styles and floor level. 3. This façade is for illustrative purposes. 4. Pools & Car parking canopies are not included.

LUMERA WATER CHALETS

TYPE L



BACK

DISCLAIMER
 1. This façade is subjected to minor amendments without prior notice. 2. Specification, materials and/or colors might be changed based on the final design and material availability, actual unit finishings for front windows, porches, Terraces Area, loggia and exterior trim may vary by elevation styles and floor level. 3. This façade is for illustrative purposes. 4. Pools & Car parking canopies are not included.

LUMERA WATER CHALETS

TYPE L

GROUND FLOOR



UNIT 01

3 – BEDROOM CHALET

INTERNAL AREA **118.7 m²**

TERRACES AREA **5.9 m²**

TOTAL AREA **124.6 m²**

UNIT 02

2 – BEDROOM CHALET

INTERNAL AREA **101.5 m²**

TERRACES AREA **7.2 m²**

TOTAL AREA **108.7 m²**



DISCLAIMER
 1. All rooms dimensions are measured to structural elements and exclude wall finished and construction tolerances. 2. All materials, dimensions and drawings are approximate, information subject to change without notice. 3. Actual areas may vary from the-stated area, Drawings not to scale. The developer reserves the right to make revisions. 4. Actual front windows, porches, terraces, loggia and exterior trim detail may vary by elevation styles and floor level. 5. Pools & Car parking canopies are not included. 6. Unit exact orientation and mirror, if any are according to the technical Contract Appendix and detailed master plan. The above is only for illustrative Purposes

LUMERA WATER CHALETS

TYPE L GROUND FLOOR



UNIT 03 2 – BEDROOM CHALET

INTERNAL AREA **101.5 m²**
 TERRACES AREA **7.2 m²**
 TOTAL AREA **108.7 m²**

UNIT 04 SENIOR CHALET

INTERNAL AREA **134.7 m²**
 TERRACES AREA **25.9 m²**
 TOTAL AREA **160.6 m²**

UNIT 05 2 – BEDROOM CHALET

INTERNAL AREA **101.7 m²**
 TERRACES AREA **7.1 m²**
 TOTAL AREA **108.8 m²**



DISCLAIMER
 1. All rooms dimensions are measured to structural elements and exclude wall finished and construction tolerances. 2. All materials, dimensions and drawings are approximate, information subject to change without notice. 3. Actual areas may vary from the-stated area, Drawings not to scale. The developer reserves the right to make revisions. 4. Actual front windows, porches, terraces, loggia and exterior trim detail may vary by elevation styles and floor level. 5. Pools & Car parking canopies are not included. 6. Unit exact orientation and mirror, if any are according to the technical Contract Appendix and detailed master plan. The above is only for Illustrative Purposes

LUMERA WATER CHALETS

TYPE L GROUND FLOOR



UNIT 06 2 – BEDROOM CHALET

INTERNAL AREA **101.4 m²**
 TERRACES AREA **7.2 m²**
 TOTAL AREA **108.6 m²**

UNIT 07 3 – BEDROOM CHALET

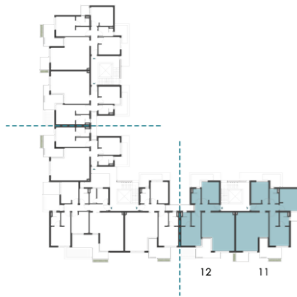
INTERNAL AREA **118.9 m²**
 TERRACES AREA **5.9 m²**
 TOTAL AREA **124.8 m²**



DISCLAIMER
 1. All rooms dimensions are measured to structural elements and exclude wall finished and construction tolerances. 2. All materials, dimensions and drawings are approximate, information subject to change without notice. 3. Actual areas may vary from the-stated area, Drawings not to scale. The developer reserves the right to make revisions. 4. Actual front windows, porches, terraces, loggia and exterior trim detail may vary by elevation styles and floor level. 5. Pools & Car parking canopies are not included. 6. Unit exact orientation and mirror, if any are according to the technical Contract Appendix and detailed master plan. The above is only for Illustrative Purposes

LUMERA WATER CHALETS

TYPE L FIRST FLOOR



UNIT 11

3 – BEDROOM CHALET

INTERNAL AREA **119.5 m²**

TERRACES AREA **16.6 m²**

TOTAL AREA **136.1 m²**

UNIT 12

2 – BEDROOM CHALET

INTERNAL AREA **101.7 m²**

TERRACES AREA **12.2 m²**

TOTAL AREA **113.9 m²**

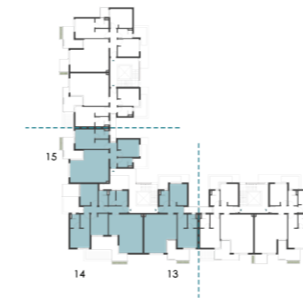


DISCLAIMER

1. All rooms dimensions are measured to structural elements and exclude wall finished and construction tolerances. 2. All materials, dimensions and drawings are approximate, information subject to change without notice. 3. Actual areas may vary from the-stated area, Drawings not to scale. The developer reserves the right to make revisions. 4. Actual front windows, porches, terraces, loggia and exterior trim detail may vary by elevation styles and floor level. 5. Pools & Car parking canopies are not included. 6. Unit exact orientation and mirror, if any are according to the technical Contract Appendix and detailed master plan. The above is only for Illustrative Purposes

LUMERA WATER CHALETS

TYPE L FIRST FLOOR



UNIT 13

2 – BEDROOM CHALET

INTERNAL AREA **101.7 m²**

TERRACES AREA **12.7 m²**

TOTAL AREA **114.4 m²**

UNIT 14

SENIOR CHALET

INTERNAL AREA **133.7 m²**

TERRACES AREA **22.1 m²**

TOTAL AREA **155.8 m²**

UNIT 15

2 – BEDROOM CHALET

INTERNAL AREA **102.3 m²**

TERRACES AREA **12.9 m²**

TOTAL AREA **115.2 m²**

DISCLAIMER

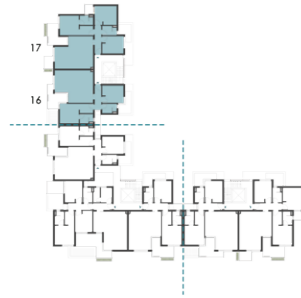
1. All rooms dimensions are measured to structural elements and exclude wall finished and construction tolerances. 2. All materials, dimensions and drawings are approximate, information subject to change without notice. 3. Actual areas may vary from the-stated area, Drawings not to scale. The developer reserves the right to make revisions. 4. Actual front windows, porches, terraces, loggia and exterior trim detail may vary by elevation styles and floor level. 5. Pools & Car parking canopies are not included. 6. Unit exact orientation and mirror, if any are according to the technical Contract Appendix and detailed master plan. The above is only for Illustrative Purposes



LUMERA WATER CHALETS

TYPE L

FIRST FLOOR



UNIT 16

2 – BEDROOM CHALET

INTERNAL AREA **101.7 m²**

TERRACES AREA **12.2 m²**

TOTAL AREA **113.9 m²**

UNIT 17

3 – BEDROOM CHALET

INTERNAL AREA **119.5 m²**

TERRACES AREA **16.5 m²**

TOTAL AREA **136.0 m²**

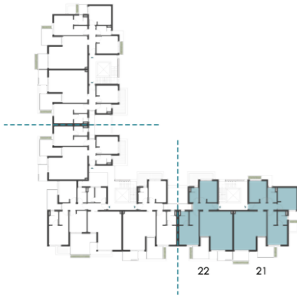


DISCLAIMER
 1. All rooms dimensions are measured to structural elements and exclude wall finished and construction tolerances. 2. All materials, dimensions and drawings are approximate, information subject to change without notice. 3. Actual areas may vary from the-stated area, Drawings not to scale. The developer reserves the right to make revisions. 4. Actual front windows, porches, terraces, loggia and exterior trim detail may vary by elevation styles and floor level. 5. Pools & Car parking canopies are not included. 6. Unit exact orientation and mirror, if any are according to the technical Contract Appendix and detailed master plan. The above is only for Illustrative Purposes

LUMERA WATER CHALETS

TYPE L

SECOND FLOOR



UNIT 21

3 – BEDROOM CHALET

INTERNAL AREA **119.4 m²**

TERRACES AREA **15.5 m²**

TOTAL AREA **134.9 m²**

UNIT 22

2 – BEDROOM CHALET

INTERNAL AREA **102.1 m²**

TERRACES AREA **16.4 m²**

TOTAL AREA **118.5 m²**



DISCLAIMER

1. All rooms dimensions are measured to structural elements and exclude wall finished and construction tolerances. 2. All materials, dimensions and drawings are approximate, information subject to change without notice. 3. Actual areas may vary from the-stated area, Drawings not to scale. The developer reserves the right to make revisions. 4. Actual front windows, porches, terraces, loggia and exterior trim detail may vary by elevation styles and floor level. 5. Pools & Car parking canopies are not included. 6. Unit exact orientation and mirror, if any are according to the technical Contract Appendix and detailed master plan. The above is only for Illustrative Purposes

LUMERA WATER CHALETS

TYPE L

SECOND FLOOR



UNIT 23

2 – BEDROOM CHALET

INTERNAL AREA **102.1 m²**

TERRACES AREA **16.4 m²**

TOTAL AREA **118.5 m²**

UNIT 24

SENIOR CHALET

INTERNAL AREA **133.8 m²**

TERRACES AREA **22.7 m²**

TOTAL AREA **156.5 m²**

UNIT 25

2 – BEDROOM CHALET

INTERNAL AREA **102.7 m²**

TERRACES AREA **16.8 m²**

TOTAL AREA **119.5 m²**

DISCLAIMER

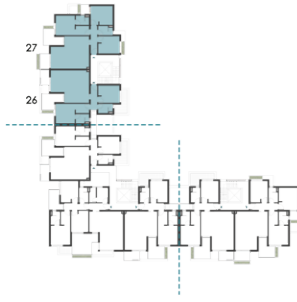
1. All rooms dimensions are measured to structural elements and exclude wall finished and construction tolerances. 2. All materials, dimensions and drawings are approximate, information subject to change without notice. 3. Actual areas may vary from the-stated area, Drawings not to scale. The developer reserves the right to make revisions. 4. Actual front windows, porches, terraces, loggia and exterior trim detail may vary by elevation styles and floor level. 5. Pools & Car parking canopies are not included. 6. Unit exact orientation and mirror, if any are according to the technical Contract Appendix and detailed master plan. The above is only for Illustrative Purposes



LUMERA WATER CHALETS

TYPE L

SECOND FLOOR



UNIT 26

2 – BEDROOM CHALET

INTERNAL AREA **102.1 m²**

TERRACES AREA **16.4 m²**

TOTAL AREA **118.5 m²**

UNIT 27

3 – BEDROOM CHALET

INTERNAL AREA **119.4 m²**

TERRACES AREA **15.5 m²**

TOTAL AREA **134.9 m²**



DISCLAIMER
 1. All rooms dimensions are measured to structural elements and exclude wall finished and construction tolerances. 2. All materials, dimensions and drawings are approximate, information subject to change without notice. 3. Actual areas may vary from the-stated area, Drawings not to scale. The developer reserves the right to make revisions. 4. Actual front windows, porches, terraces, loggia and exterior trim detail may vary by elevation styles and floor level. 5. Pools & Car parking canopies are not included. 6. Unit exact orientation and mirror, if any are according to the technical Contract Appendix and detailed master plan. The above is only for Illustrative Purposes

Lumera
WATER CHALETS

LUMERA WATER CHALETS
TYPE S

LUMERA WATER CHALETS

TYPE S



FRONT

DISCLAIMER
1. This façade is subjected to minor amendments without prior notice. 2. Specification, materials and/or colors might be changed based on the final design and material availability, actual unit finishings for front windows, porches, Terraces Area, loggia and exterior trim may vary by elevation styles and floor level. 3. This façade is for illustrative purposes. 4. Pools & Car parking canopies are not included.

LUMERA WATER CHALETS

TYPE S



BACK

DISCLAIMER
1. This façade is subjected to minor amendments without prior notice. 2. Specification, materials and/or colors might be changed based on the final design and material availability, actual unit finishings for front windows, porches, Terraces Area, loggia and exterior trim may vary by elevation styles and floor level. 3. This façade is for illustrative purposes. 4. Pools & Car parking canopies are not included.

LUMERA WATER CHALETS

TYPE S

GROUND FLOOR



UNIT 01

3 – BEDROOM CHALET

INTERNAL AREA **118.5 m²**

TERRACES AREA **5.9 m²**

TOTAL AREA **124.4 m²**

UNIT 02

2 – BEDROOM CHALET

INTERNAL AREA **101.3 m²**

TERRACES AREA **7.2 m²**

TOTAL AREA **108.5 m²**



DISCLAIMER
1. All rooms dimensions are measured to structural elements and exclude wall finished and construction tolerances. 2. All materials, dimensions and drawings are approximate, information subject to change without notice. 3. Actual areas may vary from the-stated area, Drawings not to scale. The developer reserves the right to make revisions. 4. Actual front windows, porches, terraces, loggia and exterior trim detail may vary by elevation styles and floor level. 5. Pools & Car parking canopies are not included. 6. Unit exact orientation and mirror, if any are according to the technical Contract Appendix and detailed master plan. The above is only for Illustrative Purposes

LUMERA WATER CHALETs

TYPE S GROUND FLOOR



UNIT 03

2 - BEDROOM CHALET

INTERNAL AREA **101.3 m²**
TERRACES AREA **7.2 m²**
TOTAL AREA **108.5 m²**

UNIT 04

SENIOR CHALET

INTERNAL AREA **134.4 m²**
TERRACES AREA **25.9 m²**
TOTAL AREA **160.3 m²**

UNIT 05

2 - BEDROOM CHALET

INTERNAL AREA **101.5 m²**
TERRACES AREA **7.1 m²**
TOTAL AREA **108.6 m²**



DISCLAIMER
1. All rooms dimensions are measured to structural elements and exclude wall finished and construction tolerances. 2. All materials, dimensions and drawings are approximate, information subject to change without notice. 3. Actual areas may vary from the-stated area, Drawings not to scale. The developer reserves the right to make revisions. 4. Actual front windows, porches, terraces, loggia and exterior trim detail may vary by elevation styles and floor level. 5. Pools & Car parking canopies are not included. 6. Unit exact orientation and mirror, if any are according to the technical Contract Appendix and detailed master plan. The above is only for Illustrative Purposes

LUMERA WATER CHALETs

TYPE S GROUND FLOOR



UNIT 06

2 - BEDROOM CHALET

INTERNAL AREA **101.2 m²**
TERRACES AREA **7.2 m²**
TOTAL AREA **108.4 m²**

UNIT 07

3 - BEDROOM CHALET

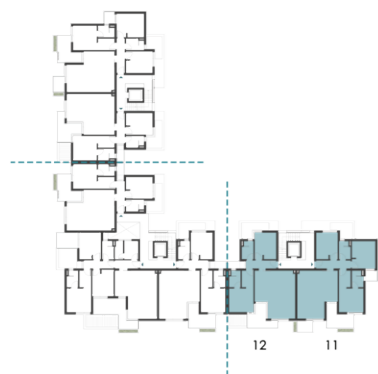
INTERNAL AREA **118.7 m²**
TERRACES AREA **5.9 m²**
TOTAL AREA **124.6 m²**



DISCLAIMER
1. All rooms dimensions are measured to structural elements and exclude wall finished and construction tolerances. 2. All materials, dimensions and drawings are approximate, information subject to change without notice. 3. Actual areas may vary from the-stated area, Drawings not to scale. The developer reserves the right to make revisions. 4. Actual front windows, porches, terraces, loggia and exterior trim detail may vary by elevation styles and floor level. 5. Pools & Car parking canopies are not included. 6. Unit exact orientation and mirror, if any are according to the technical Contract Appendix and detailed master plan. The above is only for Illustrative Purposes

LUMERA WATER CHALETS

TYPE S
FIRST FLOOR



UNIT 11

3 – BEDROOM CHALET

INTERNAL AREA **119.3 m²**

TERRACES AREA **16.6 m²**

TOTAL AREA **135.9 m²**

UNIT 12

2 – BEDROOM CHALET

INTERNAL AREA **101.5 m²**

TERRACES AREA **12.2 m²**

TOTAL AREA **113.7 m²**



LUMERA WATER CHALETS

TYPE S
FIRST FLOOR



UNIT 13

2 – BEDROOM CHALET

INTERNAL AREA **101.5 m²**

TERRACES AREA **12.7 m²**

TOTAL AREA **114.2 m²**

UNIT 14

SENIOR CHALET

INTERNAL AREA **133.5 m²**

TERRACES AREA **22.1 m²**

TOTAL AREA **155.6 m²**

UNIT 15

2 – BEDROOM CHALET

INTERNAL AREA **102.1 m²**

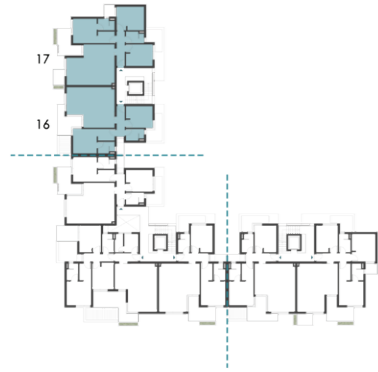
TERRACES AREA **12.9 m²**

TOTAL AREA **115.0 m²**



LUMERA WATER CHALETS

TYPE S FIRST FLOOR



UNIT 16 2 – BEDROOM CHALET

INTERNAL AREA	101.5 m²
TERRACES AREA	12.2 m²
TOTAL AREA	113.7 m²

UNIT 17 3 – BEDROOM CHALET

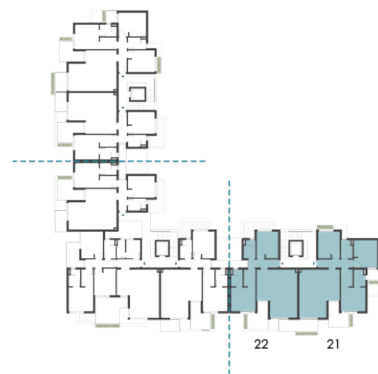
INTERNAL AREA	119.3 m²
TERRACES AREA	16.5 m²
TOTAL AREA	135.8 m²



DISCLAIMER
 1. All rooms dimensions are measured to structural elements and exclude wall finished and construction tolerances. 2. All materials, dimensions and drawings are approximate, information subject to change without notice. 3. Actual areas may vary from the-stated area, Drawings not to scale. The developer reserves the right to make revisions. 4. Actual front windows, porches, terraces, loggia and exterior trim detail may vary by elevation styles and floor level. 5. Pools & Car parking canopies are not included. 6. Unit exact orientation and mirror, if any are according to the technical Contract Appendix and detailed master plan. The above is only for Illustrative Purposes

LUMERA WATER CHALETS

TYPE S SECOND FLOOR



UNIT 21

3 – BEDROOM CHALET

INTERNAL AREA **119.2 m²**

TERRACES AREA **15.5 m²**

TOTAL AREA **134.7 m²**

UNIT 22

2 – BEDROOM CHALET

INTERNAL AREA **101.9 m²**

TERRACES AREA **16.4 m²**

TOTAL AREA **118.3 m²**



LUMERA WATER CHALETS

TYPE S SECOND FLOOR



UNIT 23

2 – BEDROOM CHALET

INTERNAL AREA **101.9 m²**

TERRACES AREA **16.4 m²**

TOTAL AREA **118.3 m²**

UNIT 24

SENIOR CHALET

INTERNAL AREA **133.5 m²**

TERRACES AREA **22.7 m²**

TOTAL AREA **156.2 m²**

UNIT 25

2 – BEDROOM CHALET

INTERNAL AREA **102.5 m²**

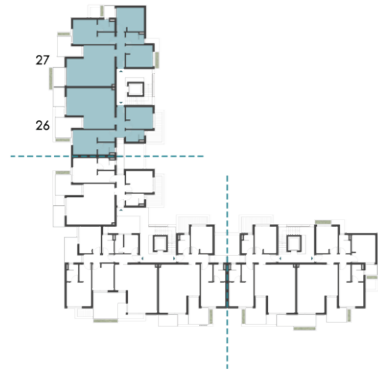
TERRACES AREA **16.8 m²**

TOTAL AREA **119.3 m²**



LUMERA WATER CHALETS

TYPE S SECOND FLOOR



UNIT 26 2 - BEDROOM CHALET

INTERNAL AREA **101.9 m²**
 TERRACES AREA **16.4 m²**
 TOTAL AREA **118.3 m²**

UNIT 27 3 - BEDROOM CHALET

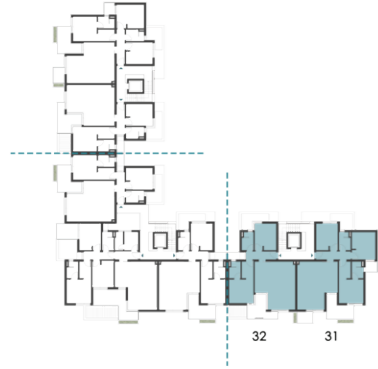
INTERNAL AREA **119.2 m²**
 TERRACES AREA **15.5 m²**
 TOTAL AREA **134.7 m²**



DISCLAIMER
 1. All rooms dimensions are measured to structural elements and exclude wall finished and construction tolerances. 2. All materials, dimensions and drawings are approximate, information subject to change without notice. 3. Actual areas may vary from the-stated area, Drawings not to scale. The developer reserves the right to make revisions. 4. Actual front windows, porches, terraces, loggia and exterior trim detail may vary by elevation styles and floor level. 5. Pools & Car parking canopies are not included. 6. Unit exact orientation and mirror, if any are according to the technical Contract Appendix and detailed master plan. The above is only for Illustrative Purposes

LUMERA WATER CHALETS

TYPE S
THIRD FLOOR



UNIT 31

3 – BEDROOM CHALET

INTERNAL AREA **119.3 m²**
TERRACES AREA **16.6 m²**
TOTAL AREA **135.9 m²**

UNIT 32

2 – BEDROOM CHALET

INTERNAL AREA **101.5 m²**
TERRACES AREA **12.2 m²**
TOTAL AREA **113.7 m²**



LUMERA WATER CHALETS

TYPE S
THIRD FLOOR



UNIT 33

2 – BEDROOM CHALET

INTERNAL AREA **101.5 m²**
TERRACES AREA **12.7 m²**
TOTAL AREA **114.2 m²**

UNIT 34

SENIOR CHALET

INTERNAL AREA **133.5 m²**
TERRACES AREA **22.1 m²**
TOTAL AREA **155.6 m²**

UNIT 35

2 – BEDROOM CHALET

INTERNAL AREA **102.1 m²**
TERRACES AREA **12.7 m²**
TOTAL AREA **114.8 m²**

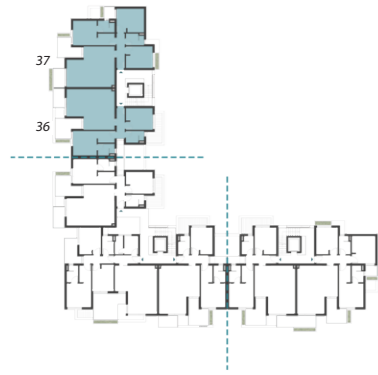


DISCLAIMER
1. All rooms dimensions are measured to structural elements and exclude wall finished and construction tolerances. 2. All materials, dimensions and drawings are approximate, information subject to change without notice. 3. Actual areas may vary from the-stated area, Drawings not to scale. The developer reserves the right to make revisions. 4. Actual front windows, porches, terraces, loggia and exterior trim detail may vary by elevation styles and floor level. 5. Pools & Car parking canopies are not included. 6. Unit exact orientation and mirror, if any are according to the technical Contract Appendix and detailed master plan. The above is only for Illustrative Purposes

DISCLAIMER
1. All rooms dimensions are measured to structural elements and exclude wall finished and construction tolerances. 2. All materials, dimensions and drawings are approximate, information subject to change without notice. 3. Actual areas may vary from the-stated area, Drawings not to scale. The developer reserves the right to make revisions. 4. Actual front windows, porches, terraces, loggia and exterior trim detail may vary by elevation styles and floor level. 5. Pools & Car parking canopies are not included. 6. Unit exact orientation and mirror, if any are according to the technical Contract Appendix and detailed master plan. The above is only for Illustrative Purposes

LUMERA WATER CHALETS

TYPE S
THIRD FLOOR



UNIT 36 2 – BEDROOM CHALET

INTERNAL AREA **101.5 m²**
TERRACES AREA **12.2 m²**
TOTAL AREA **113.7 m²**

UNIT 37 3 – BEDROOM CHALET

INTERNAL AREA **119.3 m²**
TERRACES AREA **16.5 m²**
TOTAL AREA **135.8 m²**



DISCLAIMER
1. All rooms dimensions are measured to structural elements and exclude wall finished and construction tolerances. 2. All materials, dimensions and drawings are approximate, information subject to change without notice. 3. Actual areas may vary from the-stated area, Drawings not to scale. The developer reserves the right to make revisions. 4. Actual front windows, porches, terraces, loggia and exterior trim detail may vary by elevation styles and floor level. 5. Pools & Car parking canopies are not included. 6. Unit exact orientation and mirror, if any are according to the technical Contract Appendix and detailed master plan. The above is only for Illustrative Purposes

INTERIORS



Disclaimer: 1. All materials, specification, colors and furniture are tentative, and subjected to changes and alteration without notice depending on availability of specified materials, specification and/or colors.
2. Finishing and furniture are according to the specs in Contract Appendix. The above is only for Illustrative Purposes



Disclaimer: 1. All materials, specification, colors and furniture are tentative, and subjected to changes and alteration without notice depending on availability of specified materials, specification and/or colors.
2. Finishing and furniture are according to the specs in Contract Appendix. The above is only for Illustrative Purposes





OUR PARTNERS

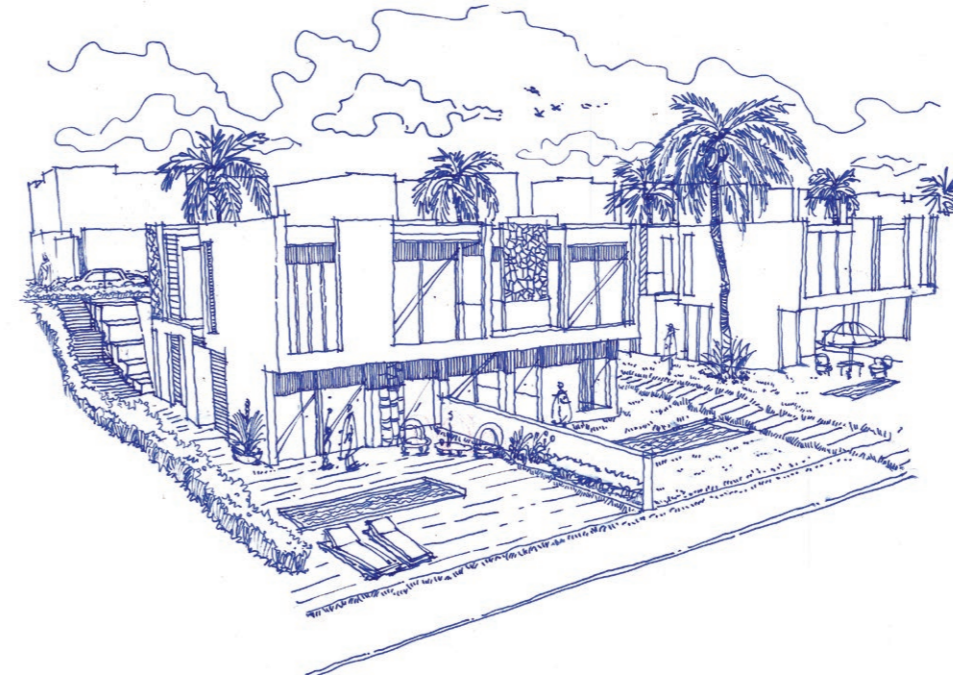
OUR PARTNERS



EDSA - *Master planner*

Location: Florida, USA

Founded in 1960 by Edward D. Stone, Jr., EDSA has transformed the practice of master planning and landscape architecture. The story of EDSA is a story that combines experience and curiosity with a powerful legacy of placemaking. Our founder encouraged and inspired generations of designers to make bold choices and stand with confidence in crafting visionary solutions that facilitate experimentation and pioneering design. Today, the EDSA team has brought creative influence to more than 2,500 sites worldwide. Driven by a passion for artistry, and through collaboration and innovation, EDSA continues to be highly committed to the design of transformative and inspiring places that are environmentally responsive, reflect humanity and contribute to a meaningful future for all.



A word from the *Master planner*

“It has been an exciting journey for us to work on the Solaré project, where a beautiful vision come to fruition step by step on the master plan. We want this project to be a place where people can take a lazy stroll along the beach, watch sun-rise and sunset at their own balconies, spend a quiet day by the pool, share a few fun mo-ments with their loved ones in the garden, meet friends for a delicious dinner at the village, or simply enjoy the sweetness of doing nothing in the endless lagoons. It’s a place to restore the peaceful mind, recharge the happy heart and appreciate the love for life. With the collaborative wisdom of the entire team, this dream has become true, and we are very proud to be part of it.”

Xiang Li, PLA, ASLA
Principal, EDSA

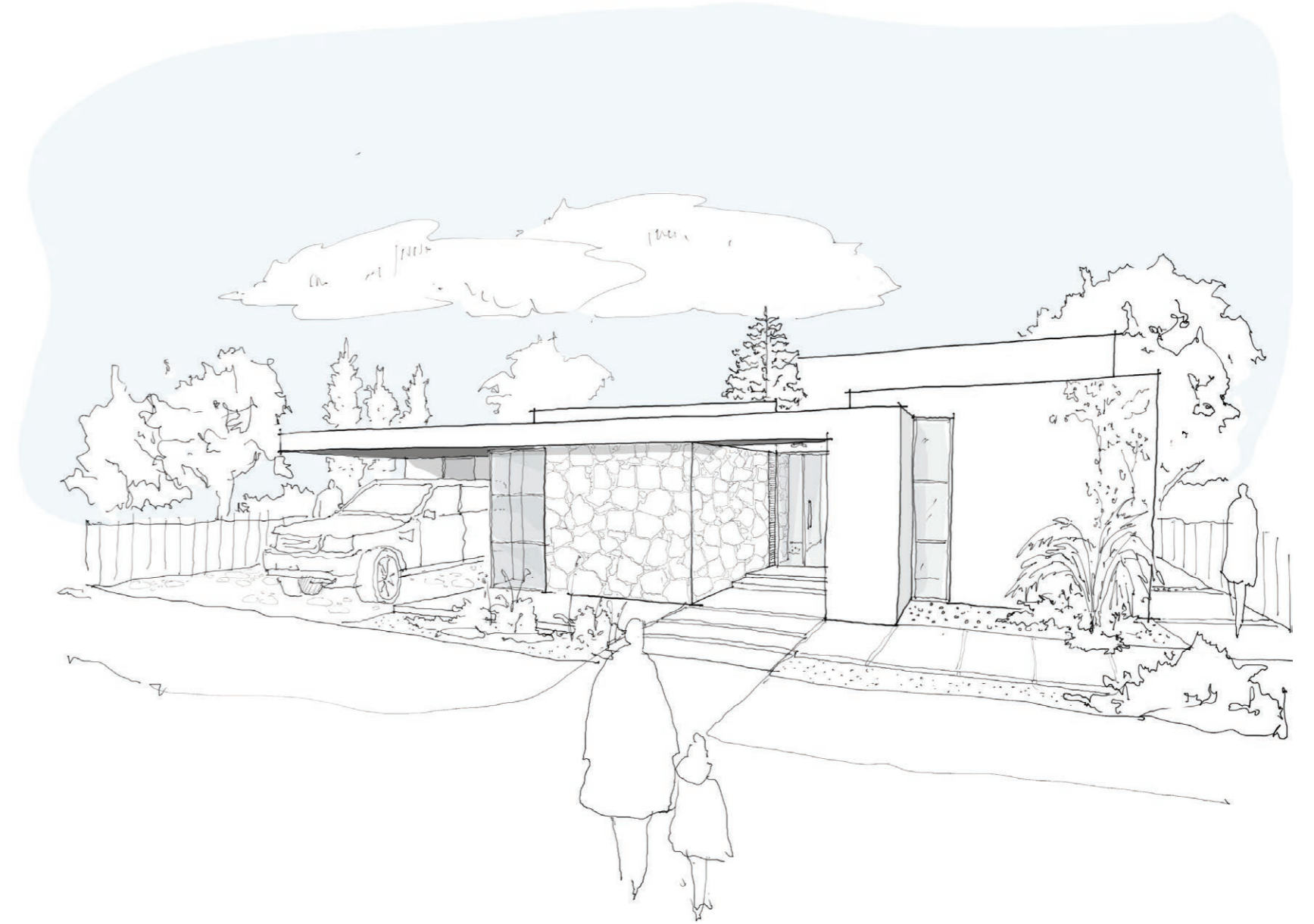
OUR PARTNERS



WSA - *Architects*

Location: Amsterdam, Netherlands

The firm's multicultural team, with its collective experience, supports a mature stance for projects that look to heritage and culture, as well as the contemporary world. From its regional offices in the UAE, Netherlands and Egypt, Whitespace has managed to complete a diverse and sizable number of successful projects with the most reputable developers and individuals in the Middle East and Europe. WSA continues to play a role in shaping cityscapes in Europe, The Middle East and beyond. Our designs, benefited by close collaboration and synergy with meticulous attention to details, creates architecture of excellence that captures luxury and elegance.





  misritaliaproperties
www.misritaliaproperties.com

Villa 8, La Nuova Vista Compound,
New Cairo, Cairo.

Misr Italia Properties reserves the right to make minor alterations without prior notice. All renderings and other visual materials, design, and facades are for demonstrative purposes only and are subject to change. Diagrams are not to scale and are for illustrative purposes only. Finishing is according to the specs in contract appendix.

 16519